



Australian Government

Department of Social Services

# The Disability Support Pension

## Changing the Impairment Tables

How we are talking to the community

*An Easy Read fact sheet*



## How to use this fact sheet



The Australian Government Department of Social Services (DSS) wrote this fact sheet.

When you see the word 'we', it means DSS.



We wrote this fact sheet in an easy to read way.

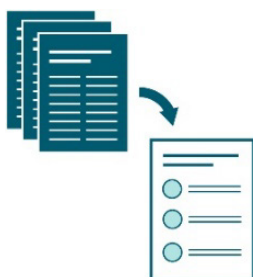
We use pictures to explain some ideas.

**Bold**  
Not bold

We wrote some words in **bold**.

This means the letters are thicker and darker.

We explain what these bold words mean.



This Easy Read fact sheet is a summary of another document. This means it only includes the most important ideas.



You can find more information on our website.

[www.engage.dss.gov.au](http://www.engage.dss.gov.au)



You can ask for help to read this fact sheet.

A friend, family member or support person may be able to help you.

## What is this fact sheet about?



### The **Disability Support Pension (DSP)**

is a government payment.

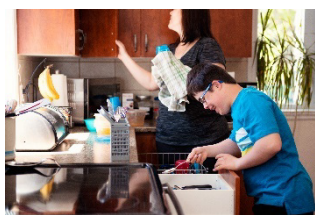
It supports people who have a disability that affects how much they can work.



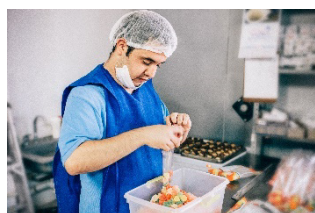
To apply for DSP, your doctor must tell us about:

- your disability
- what treatment you get.

We use this information to find out how your disability affects:



- your day-to-day life



- what work you can do.



We use a tool called the Impairment Tables to:

- look at this information
- decide who can get the DSP.



At the moment there are 15 Tables.

Each Table rates how much your disability affects a part of your life.



We have been using the Tables for 10 years.

Along the way, a lot has changed.



We want to check what parts of the Tables:

- still work well
- need to change.

In this fact sheet we explain:



- what work we have already done



- how to tell us what you think.



## What we have done so far



In 2021 we asked people what they thought about the Tables.

We heard from:



- people with disability



- their families and carers.



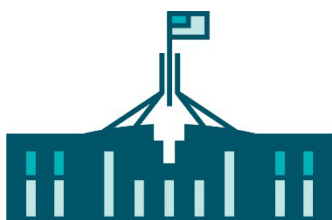
We also heard from organisations that:

- support people with disability
- speak up for them.

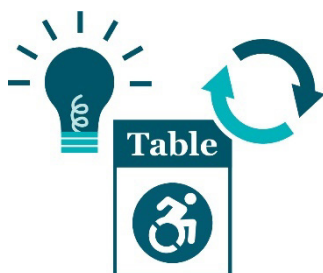
And we heard from:



- doctors and health care workers



- people who work for the government.



We used their ideas to work out how we could change the Tables.

## How will the new Tables work?



Once we change the Tables, we will use them for new people who apply for a DSP.



People who already have a DSP won't have to apply again.



But if we need to check that you still need a DSP, we will use the new Tables.



## How to tell us what you think



We have some ideas about how to change the Tables.

And we want to know what you think.



We have some questions for you.



You can answer our questions on our website.

[www.engage.dss.gov.au](http://www.engage.dss.gov.au)



You don't have to answer all our questions at once.

You can save your answers and come back later.

We wrote a guide to explain:



- what we want to change



- the questions on our website.

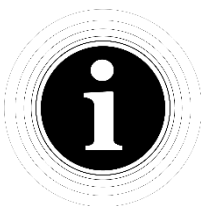


You can find the Easy Read version of this guide on our website.

[www.engage.dss.gov.au](http://www.engage.dss.gov.au)



Please tell us what you think before  
11 November 2022.



This Easy Read document was created by the Information Access Group using stock photography and custom images. The images may not be reused without permission. For any enquiries about the images, please visit [www.informationaccessgroup.com](http://www.informationaccessgroup.com).

Quote job number 4937-A.