



**Australian Government**  
**Department of Social Services**

**Easy Read paper**

# **The Future of Supported Employment**

**July 2023**





## What is in this paper

What is in this paper .....	2
How to use this paper .....	3
What is this paper about? .....	4
Background.....	5
Structural Adjustment Fund .....	7
Disability Employment Expos .....	9
Disability Employment Advocacy and Information Supports for Supported Employees and their Families and Carers	13

## How to use this paper



Australian Government  
Department of Social Services

The Department of Social Services wrote this paper.

When you see the word 'we', it means the Department of Social Services.



We wrote this paper in an easy to read way.

We use pictures to explain some ideas.

Bold  
**Bold**

We wrote some hard words in **bold**.

This means the letters are thicker and darker.

We explain what the hard words mean.

You can ask for help to read this paper.

You could ask a friend, family member, support person or **advocate**.

An **advocate** is a person who is on your side.

They work for you and help you have a voice.



## What is this paper about?



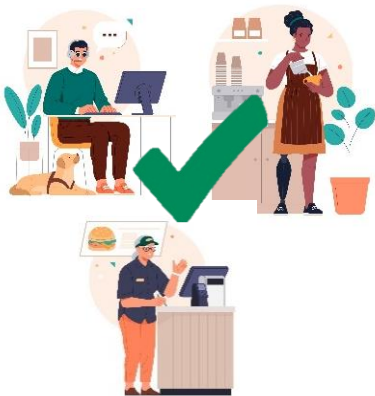
In Australia, there are jobs where you get extra support while you are at work.

Lots of these workplaces are called Australian Disability Enterprises.

We call them ADEs for short.



This is also called supported employment.



This paper is about:

- how we can make sure people have a chance to work in lots of different types of workplaces
- some new projects we will be doing to help this happen
- how you can help us design the new projects.



## Background



There are about 160 ADEs around Australia.

Lots of people with disability work in them.

The workers get help to do their job.

We call them **supported employees**.



Some people might like to keep working in an ADE.

Others may like to work in a different job.

This could be a job in **open employment**.



**open employment** is work out in the community.

Not in a workplace that has just people with disability.

For example, in an office or supermarket.



Some new projects we will be doing to give people more choice about work are:

- **Structural Adjustment Fund**

We explain this on the next page (page 7)

- Disability Employment Expos
- Disability Employment Advocacy and Information Supports for Supported Employees and their Families and Carers.



We want your help to design these new projects.

When you see this picture, it means we would like you to answer the questions.



You can write your answers in this paper.



# Structural Adjustment Fund

This Fund will give money to ADEs so they can help people with disability.

This might be to:



- help people move to open employment if they want to

and



- provide good jobs which pay well and are connected to the community.

The kind of things that could be done under the Fund could include:



- building the skills of supported employees
- and
- the people who support them at work



- working together with other organisations to make it easier for people to move into open employment.



Is there anything you wish was different about your job?

**What is important to you in your job?**

---

---

---

---

---

---

**Do you want to try different jobs?**

---

---

---



# Disability Employment Expos



The Expos will give people with disability, and their families and carers, information on different **employment pathways** and supports.

**employment pathways** are like stepping stones,

For example:

- moving from school to work, or
- from an ADE to open employment.



At the Expo you could:

- meet employers who may have jobs available
- learn about other ways you can get help to find and keep a job



- find out more about different types of employment, like **self-employment**

**self-employment** is when you work for yourself in your own business.



- learn about **advocacy** supports and services.



**advocacy** works for you.

They are on your side.

They help you speak up and get your voice heard.



At the Expos, local people with disability who own a **micro-enterprise** could attend.

They could talk about their businesses and/or sell their products.



A **micro-enterprise** is a very small business.

They are usually just run by the owner.

Or they might have a very small number of people who work in them.

One example is someone who grows and sells flowers from their home.



**What kind of information would you like to get at a Disability Employment Expo?**

---

---

---

---

---

**How would you like to find out about the Expos?**

---

---

---

---



**How can we make sure the Expos are accessible for everyone?**

---

---

---

---

---

**Where would you like the Expos to be held?**

---

---

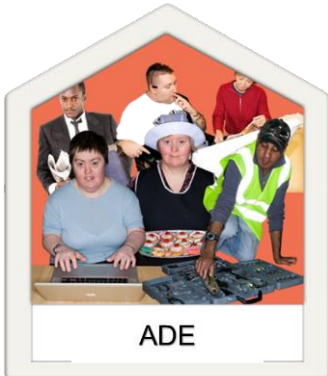
---

**Would it be good if one of the Expos was online?**

---

---

# Disability Employment Advocacy and Information Supports for Supported Employees and their Families and Carers



The new disability employment advocacy and information program would:

- focus on supporting people with disability who work in ADEs and their families and carers.
- give supported employees information about different types of work.
- work with supported employees and their families to know more about:



- their work rights and pay
- how work might impact their Disability Support Pension
- how NDIS funding can be used to find and keep a job





- different pathways to employment, including self-employment.

Supports and services available through the program could include:



- ✓ one-on-one advocacy support
- ✓ information and education sessions for supported employees
- ✓ group sessions and events for families and carers and
- ✓ decision-making supports.





**What information would you like to get through this program?**

---

---

---

---

---

---

---

---

---

---

---

---

---

---

---

---

---

---

---

---

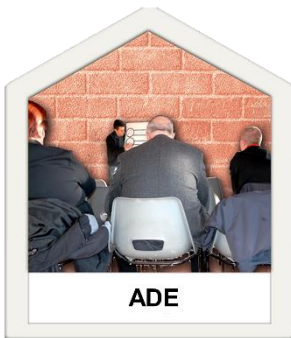
---

---

---



## How would you like this information to be given to you?



This could include:

- in-person information sessions or workshops at workplaces (ADEs)



- in-person sessions outside of workplaces



- online events

- any other ideas?

Thank you for your help.

Your feedback is very important to us.



You can send your feedback or ask questions by  
emailing:

[SEpolicy@dss.gov.au](mailto:SEpolicy@dss.gov.au)

Speak Out Tasmania made this document Easy Read.

You need to ask us if you want to use any pictures from this document.

Please contact [easyread@speakoutadvocacy.org](mailto:easyread@speakoutadvocacy.org)

