



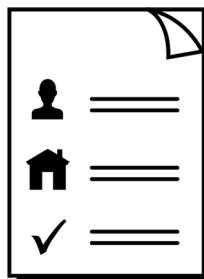
Australian Government

Department of Social Services



Ideas for a Disability Employment Centre of Excellence

Helping people with disability find and keep jobs



Easy Read

About this booklet



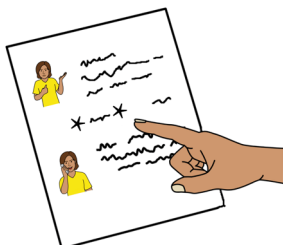
This booklet is from the Australian Government's Department of Social Services.



This booklet is written in a way that is easy to understand.



You can read more about this on our website at dss.gov.au



We add a star before and after ***hard words***. Then we explain what the words mean.



A friend, family member or support person can help you read and understand this booklet.



Contact information is at the end of this booklet.

A centre to help people with disability in the workplace



We want to make a Disability Employment Centre of Excellence.

We will call it the centre.



The centre could

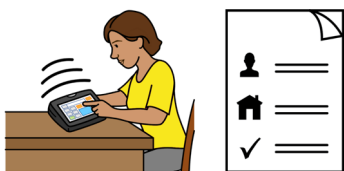
- help people with disability find and stay in jobs



- help people understand disability



- give support to employers



- make information ***accessible*** for people with disability and their families.

Accessible means everyone can understand and use the information in ways they need.

For example, Easy Read or Screen Readers.

Why do we need a centre?



The centre will

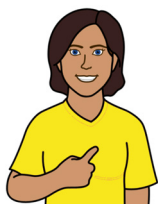
- help people with disability



- assist employment service providers and employers.



The centre could help more people with disability find ***meaningful jobs***.



Meaningful jobs means work where you

- feel valued



- have a good purpose



- are safe and happy.

Who can the centre help?



The centre can help

- people with disability and their families



- employment service providers
 - for example, help to offer more meaningful jobs to people with disability



- employers
 - for example, help to be supportive and fair to workers with disability.

More meaningful jobs could help people with disability



- feel important and valued



- be part of the community



- support themselves and their families.



Employment service providers can help people with disability who are looking for a job feel confident and ready.



They can give support to people with disability

- who need help in their job

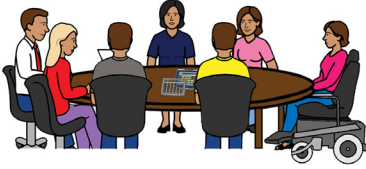
- who need help to stay in a job.



This might include changes to the job or more disability support.



The centre can help make sure employment service providers are the best at disability employment support.

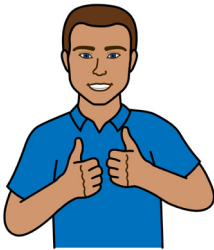


Employers can offer more jobs to people with disability to find more workers with skills to get a job done.



The centre can help employers to

- understand disability

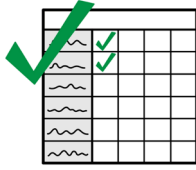


- give the best support to workers with disability.



The centre could also help governments and disability groups work together with employers and employment service providers.

How will the centre work?



There are different ways that the centre could work.



The centre could

- help and support research and training for disability employment



- be an online resource for groups to find information



- be a group of experts on disability employment who give training and information



- be an ***agency*** of the government who makes sure disability employment services work
 - agency means a permanent organisation that manages part of the government's work.

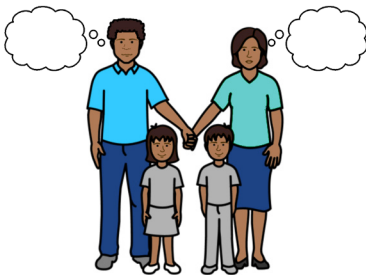
How do we make the centre happen?



We want the centre to work well and do what it says it will do for people with disability.



We will work with governments, universities and disability organisations to find out what research needs to be done.



We will ask for ideas and information from people with disability and their families.



We will work with employment service providers to help us understand processes and make plans.



The centre will have staff to do the work and help train employers to make more opportunities for people with disability in the workplace.

How to tell us your ideas



We want to hear your ideas about the centre.



You can think about

- why we need a centre



- what the centre will do for people



- who the centre will help



- who will manage the centre
 - for example, a government agency, university or on its own.



Send us your ideas by email.

COE@dss.gov.au



Australian Government
Department of Social Services

More information

For more information, contact the
Department of Social Services.



Website dss.gov.au



Email COE@dss.gov.au



If you need help to speak or listen, the
National Relay Service can help you make a call.

Call 1800 555 660

Website accesshub.gov.au/nrs-helpdesk



If you need help with other languages, contact
the Translating and Interpreting Service.

Call 131 450

Website tisonational.gov.au

Easy Read Australia created this Easy Read document in September 2023 using Picture Communication Symbols (PCS). PCS and Boardmaker are trademarks of Tobii Dynavox LLC. All rights reserved. Used with permission.

You must ask for permission to use the images in this document.

For more information, please visit easyreadaust.com.au