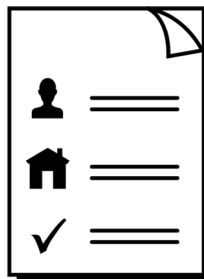


## Draft plan about the new specialist disability employment program

Tell us your ideas



Easy Read

## About this book

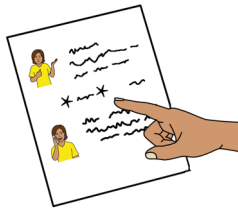
This book is from the  
Department of Social Services.



You can read more information on our  
[DSS Engage web page](http://www.engage.dss.gov.au/a-new-specialist-employment-disability-program-consultation)  
[www.engage.dss.gov.au/a-new-specialist-employment-disability-program-consultation](http://www.engage.dss.gov.au/a-new-specialist-employment-disability-program-consultation)



This book is written in a way that is easy  
to understand.



We add a star before and after **\*hard words\***.  
Then we explain what the words mean.



You can ask someone to help you read and  
understand this book.



Contact information is at the end of this book.

## The disability employment program

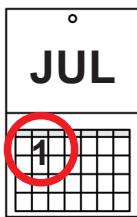


We have a new **\*Specialist Disability Employment Program\***.

We will call it **the program**.



The program will help people with disability get support to find and keep a job in Australia.

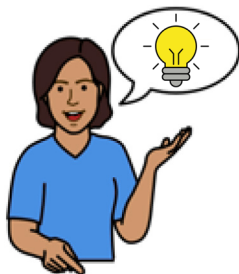


The program will start on 1 July 2025.

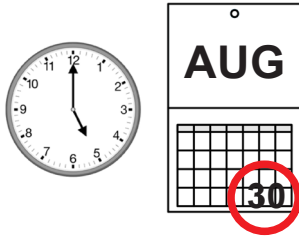
## The draft plan



We have shared our draft plan about disability employment services with the community.



We want to hear ideas about the services and who might deliver the services.



You must send your ideas to us  
**before 5 PM on Friday 30 August 2024.**

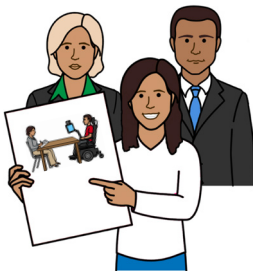


You can send your ideas by email.

**Email**      [DESConsultations@dss.gov.au](mailto:DESConsultations@dss.gov.au)



We will read everyone's ideas and write a  
final plan.



We will share our final plan with the community  
later in 2024.



Organisations can apply to be a  
**\*service provider\*** when our plan is ready.



Service providers will help participants to find  
and keep a job.

We will call them **providers**.

## Help with employment



There will be different types of services to help people find jobs.

For example

- **\*intensive services\***



- **\*flexible services\***.



Intensive services means high level support for participants to help them prepare for and find work.



Flexible services are for people who cannot use the intensive service due to family or personal reasons or because they are doing other activities.



Providers will give different types of supports depending on

- what each person needs
- what each person can do.





Providers will help people to

- find a job
- get support while they are working.

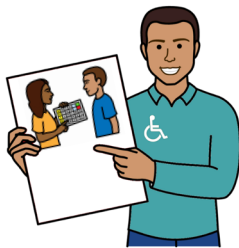


The services will be in the same locations as they are now.

## Different types of providers

There will be different types of providers with different skills.

For example



- **\*specialist providers\***
  - specialist providers will deliver services to people who have a particular disability



- **\*generalist providers\***
  - generalist providers will deliver services to anyone in the program.



## **\*Assessors\***

A group of assessors decide what supports each person might need to get work and stay in work.



Assessors will keep doing this work when the new program starts.

## **\*The Centre of Excellence\***



The Centre of Excellence will have resources and tools to help providers give good services.



The Centre for Excellence will start in March 2025.

## Participants with low work hours



Participants who can only work 0 to 7 hours a week can use the new program.

SUN	MON	TUE	WED	THU	FRI	SAT

But providers will support participants to aim for 8 hours of work a week.



Providers and employers may still get payments if participants with low work hours cannot work more hours or need more breaks.



## Participant appointments



The first interview should be done face to face to help the provider build a relationship with the participant.



The provider and participant can agree to meet in another way that suits the participant.

The provider and participant will talk to each other over 4 weeks at the start of the program.



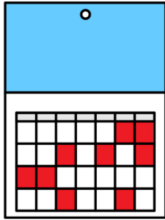
The service will start when the interview is done and the **\*job plan\*** is signed.



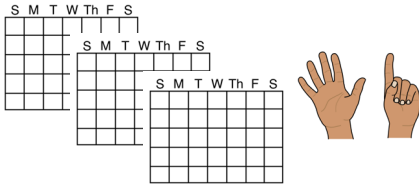
A job plan says how the participant will work with the provider to

- use the program to get ready for work
- look for a job
- stay in a job.



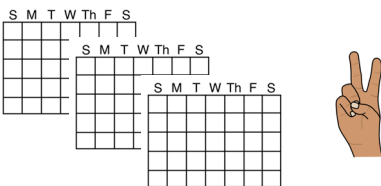


Providers will have **\*regular contact\*** with participants.

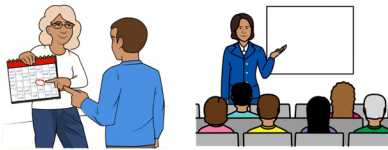


Regular contact means

- at least 6 contacts every 3 months with participants in the intensive service

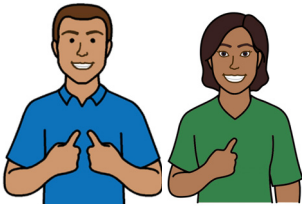


- at least 2 contacts every 3 months with participants in the flexible service.

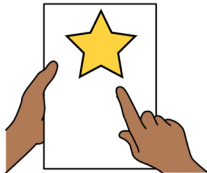


Contacts could be appointments, training or other supports.

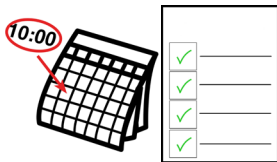
## Following the job plan



Participants must follow their job plan.



If they cannot follow their job plan the provider must make a new plan.



The new plan will list appointments and other activities the participant must do.

## Fees for providers



Providers will get different payments when they help participants.



Providers will get

- a service fee for helping a participant find a job



- outcome fees when participants work a certain amount of weeks in a job.



Providers will get a payment to support people with moderate intellectual disability who work for at least 15 hours a week.



Providers will get a payment if a participant gets support from their employer.

## How we will check the program works



We will make sure there are a lot of different providers who meet the needs of all participants and employers.



We will make sure providers are giving good services to participants.

## How we will choose providers

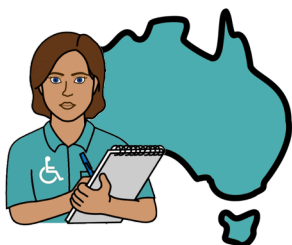


We will choose providers based on

- how they will deliver services to participants



- how they will change their plans to get good results for participants



- how they will deliver services in different parts of Australia.



## More information

More information will be on our

[DSS Engage web page](https://www.dss.gov.au/engage)

[www.engage.dss.gov.au/a-new-specialist-employment-disability-program-consultation](https://www.engage.dss.gov.au/a-new-specialist-employment-disability-program-consultation)



You can read another Easy Read book about this topic on the DSS Engage web page.

Easy Read Australia created this Easy Read document in August, 2024 using Picture Communication Symbols (PCS). PCS and Boardmaker are trademarks of Tobii Dynavox LLC. All rights reserved. Used with permission.

You must ask for permission to use the images in this document.

For more information, please visit [Easy Read Australia](https://www.easyreadaust.com.au)

[www.easyreadaust.com.au](https://www.easyreadaust.com.au)