



Australian Government

Department of Social Services

Next steps in Supported Employment

Part 1

Questions





Australian Government
Department of Social Services

The Australian Government Department of Social Services wrote this.

We say **DSS** for short.

When you see the word **we** it means DSS.



We wrote this in an easy to read way.

We use pictures to explain some ideas.

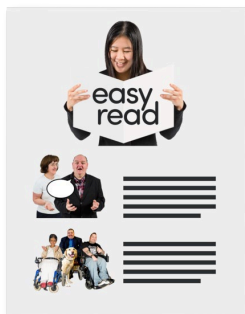
Bold

Not bold

We have some words in **bold**.

This means the letters are thicker and darker.

These are important words.



This is an Easy Read summary of another document.

This means it has the most important ideas.



We can answer any questions by email.

Email us SEPolicy@dss.gov.au

You can ask for help to read this document.



You can ask

- A friend
- Family members
- A support person.



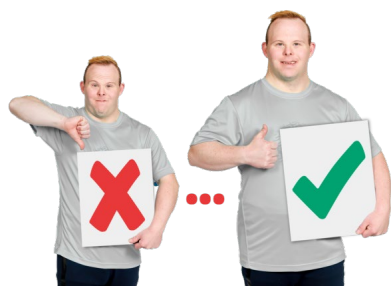
We recognise Aboriginal and Torres Strait Islander people as the **Traditional Owners** of the land we live on.



They were the **first people** to live on and use the

- Land
- Waters.

Questions



The government is working on lots of different things to improve inclusive jobs for people with disability.



To help make supported employment better we want to hear your ideas.

We will ask some questions.

You can decide if you want to answer the questions.

You do **not** have to answer them all.

You can take time to think about your ideas.



You can go to our website and read about what we are doing in Part 2.

This will help you answer our questions

It is in Easy Read

engage.dss.gov.au/next-steps-in-supported-employment



You can share your answers online.

engage.dss.gov.au/next-steps-in-supported-employment



You can write your answers.

You will need to

- Print this form
- Write your answers in the boxes with a blue or black pen.
- Scan the form
- Email it to us.



You need to email your answers to

SEPolicy@dss.gov.au

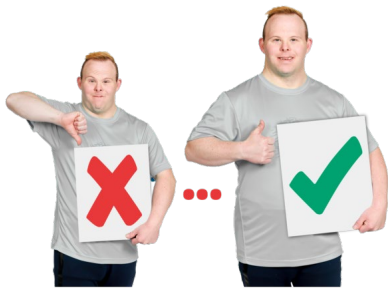


This needs to be done before 5 at night
22 June 2025.



We will use the ideas we get from everyone
to make

- A plan



- Supported employment better.

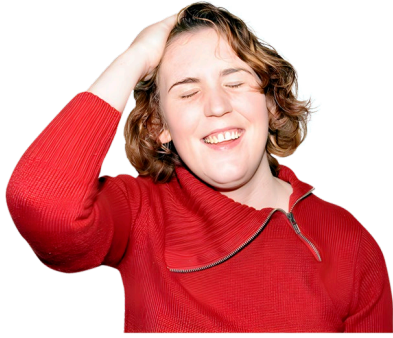


We will put space for you to write your
answers.

You can use more space if you need it.

You can ask for support to answer the
questions.

Question 1



Do you think we have forgotten some work that is happening?

Question 2



What would supported employment look like if it was perfect.

- Where would you work
- What would you be doing
- Who would you be working with?



Question 3

We want more people with high support needs to be working in **open employment**.

Open employment means anyone can get a job in that workplace.

How can we make this happen?



Question 4

The DRC thought we should make a plan to help us make supported employment better.

What ideas would you put in the plan?

Question 5



How can employers

- Keep all the jobs

And

- Pay people with disability more money?





Question 6

What do you like most about supported employment?

Contact us



You can contact us if you **need more information**.



You can send us an email.

SEPolicy@dss.gov.au

DSS3574.03.25

Images in this Easy Read must **not** be used or copied without permission.